



THE SYNGENTA TREECARE ARETOR SOLUTION

Aretor® is a highly effective naturally-derived insecticide, developed by Syngenta for the control of red palm weevil and other larval pests.

Now, the introduction of an exclusive tree-micro injection system enables the precise and targeted application of Aretor, direct into affected trees.

- Provides one year's protection from a single application
- Unobtrusive treatment by certified operators with no tree damage
- Saves time and cost
- Fits into IPM programmes

RED PALM WEEVIL THREAT

The future of date palm production for food and oil is at risk from red palm weevil.

Infestations spread very quickly to cause rot and die back of tree crowns – seriously reducing productivity and resulting tree death.

The spread of red palm weevil has been intensified by a changing climate. Control measures have, until now, proven expensive and unreliable.

Red palm weevil attacks both date palm and ornamental palms.



Active ingredient:
Emmamectin benzoate

Concentration:
4.5% or 9.5% TMI optimised formulation

Application:
Tree-micro injection only
Four injection points per tree

Application rate:
Aretor 4.5% – 48ml per tree
Aretor 9.5% – 21ml per tree

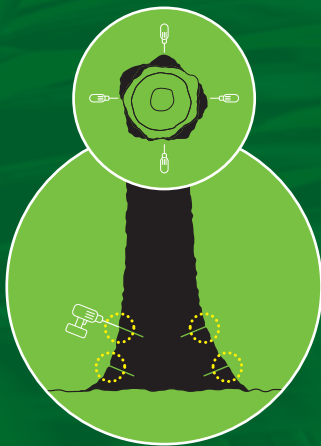
One application per year:
Pre harvest interval 90 days

TECHNICAL TREE CARE EXPERTISE

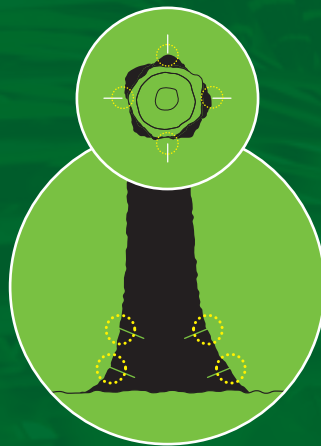
Syngenta works with dedicated and fully-trained tree care specialists, to ensure all Aretor applications are made at the optimum time and using the best micro-injection technology available – to deliver reliable results.

Advantages of tree-micro injection:

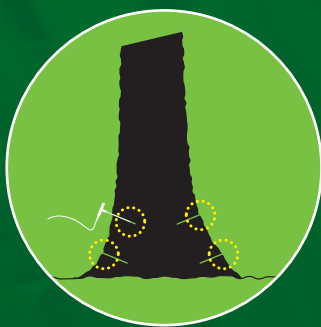
- Precise dosing of Aretor into the trunk to control the pest
- Closed-transfer eliminates exposure to operators or environment
- Each tree injection takes less than five minutes
- Injection sites sealed with homogeneous natural wood plugs
- Rapid and even movement of Aretor from the injection points, up through the stipe/trunk to the crown. Targets pest activity throughout the palm
- Treatment takes effect after 15 to 30 days, depending on climatic conditions, soil moisture and tree height



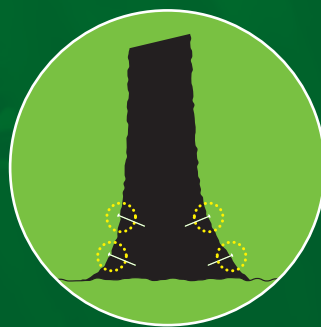
Use 6mm drill bit with drilling depth not exceeding 1/3 of the trunk diameter.



Clearly mark drilled injection sites in date palms with rough bark to easily relocate holes for injection.



Only use Syngenta TMI device to inject Aretor.



Specific wooden plugs are available with Syngenta TMI kit.

DOWNLOAD THE NEW TREECARE APP



Log your Aretor applications using the Syngenta TreeCare App.



EVERY TREE COUNTS

Syngenta TreeCare presents a pioneering new approach to deliver targeted, reliable and cost-effective solutions for the prevention of tree damage and losses caused by pests and diseases.

Syngenta provides exciting combinations of conventional chemical and innovative biological controls – along with the R&D technologies and unparalleled support for reliable results.

Together, the Syngenta TreeCare integrated approach creates highly effective and more sustainable solutions for tree care professionals and their customers.

FIND OUT MORE



Visit our website to find out more information about the risks of red palm weevil and the Syngenta TreeCare Aretor solution:

www.syngenta-treecare.com/aretor-treecare-solution

